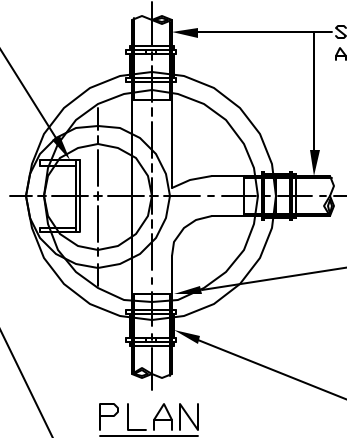


THE WORD "SANITARY" SHALL BE CAST IN THE LID OF ALL DISTRICT OWNED SANITARY SEWERS. WORDING ON LIDS OF ALL MUNICIPAL OWNED SANITARY SEWERS SHALL BE PER THE APPROPRIATE MUNICIPALITY.

PLASTIC MANHOLE STEPS 1'-4" O.C. M.A. INDUSTRIES CAT. NO. M.A. PS IPF OR APPROVED EQUAL.

CAST IRON MANHOLE FRAME AND SOLID LID, LID WITH CONCEALED PICKHOLE AND WATERTIGHT GASKET NEENAH FDY. CO. CAT. # R-1712, E, JORDAN IRON WORKS CO. CAT. # 1050-Z (HAVING A MIN. WEIGHT OF 360 LBS.) WITH HEAVY DUTY COVER. SET FRAME IN BUTYL ROPE.

8" MAX. THICK PRECAST CONCRETE ADJUSTING RINGS UNDER C.I. MANHOLE FRAME SET IN BUTYL ROPE. EXTERNAL CHIMNEY SEAL REQUIRED.

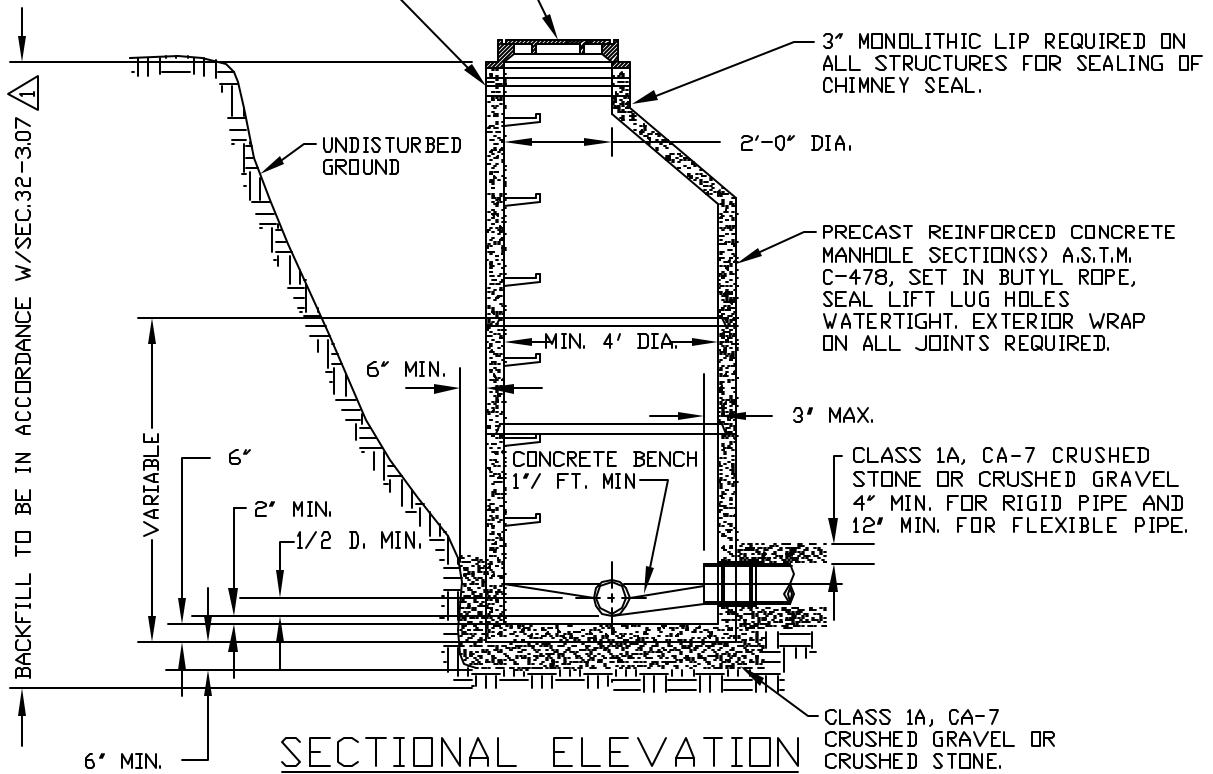


SANITARY SEWER SIZES AS SHOWN ON PLANS

SPACE BETWEEN PIPE AND WALL OF MANHOLE TO BE COMPLETELY FILLED WITH NON-SHRINKING GROUT. (TYPICAL)

FLEXIBLE RUBBER WATERTIGHT CONNECTOR FOR SANITARY MANHOLE PER A.S.T.M. C-923

PLAN



SECTIONAL ELEVATION

BENCH SHALL BE CONSTRUCTED OF CLASS SI CONCRETE.



REFERENCE STANDARD SPECIFICATIONS FOR WATER AND SEWER MAIN CONSTRUCTION IN ILLINOIS (FIFTH EDITION)

YORKVILLE-BRISTOL  
SANITARY DISTRICT

TYPE "A" MANHOLE

DESIGNED JWF	APPROVED PFM	SCALE NTS
DRAWN	DATE 10/9/06	STD-005