

PLASTIC MANHOLE STEPS 1'-4" O.C.
M.A. INDUSTRIES CAT. NO. M.A. PS IPF
OR APPROVED EQUAL.

2'-0" DIA. ACCESS
OPENING FLUSH WITH
INSIDE DIA.
OF MANHOLE.

SLAB THICKNESS AND STEEL
DESIGNED FOR ANTICIPATED
LOADINGS.

OUTSIDE DIA. OF CONCRETE
TOP SLAB SAME AS OUT-
SIDE DIA. OF MANHOLE.

CAST IRON MANHOLE FRAME AND
SOLID LID, LID WITH CONCEALED
PICKHOLE AND WATERTIGHT GASKET
NEENAH F.D.Y. CO. CAT. # R-1712,
E. JORDAN IRON WORKS CO. CAT. #
1050-Z (HAVING A MIN. WEIGHT OF
360 LBS.) WITH HEAVY DUTY
COVER. SET FRAME IN BUTYL ROPE.

THE WORD "SANITARY" SHALL BE
CAST IN THE LID OF ALL DISTRICT
OWNED SANITARY SEWERS. WORDING ON
LIDS OF ALL MUNICIPAL OWNED
SANITARY SEWERS SHALL BE PER THE
APPROPRIATE MUNICIPALITY.

PLAN

8" MAX. THICK PRECAST
CONCRETE ADJUSTING RINGS
UNDER C.I. MANHOLE FRAME
SET IN BUTYL ROPE. EXTERNAL
CHIMNEY SEAL REQUIRED.

3" MONOLITHIC LIP REQUIRED ON
ALL FLAT-TOP STRUCTURES FOR
SEALING OF CHIMNEY SEAL.

PRECAST REINFORCED
CONCRETE MANHOLE TOP
SLAB SET IN BUTYL ROPE.

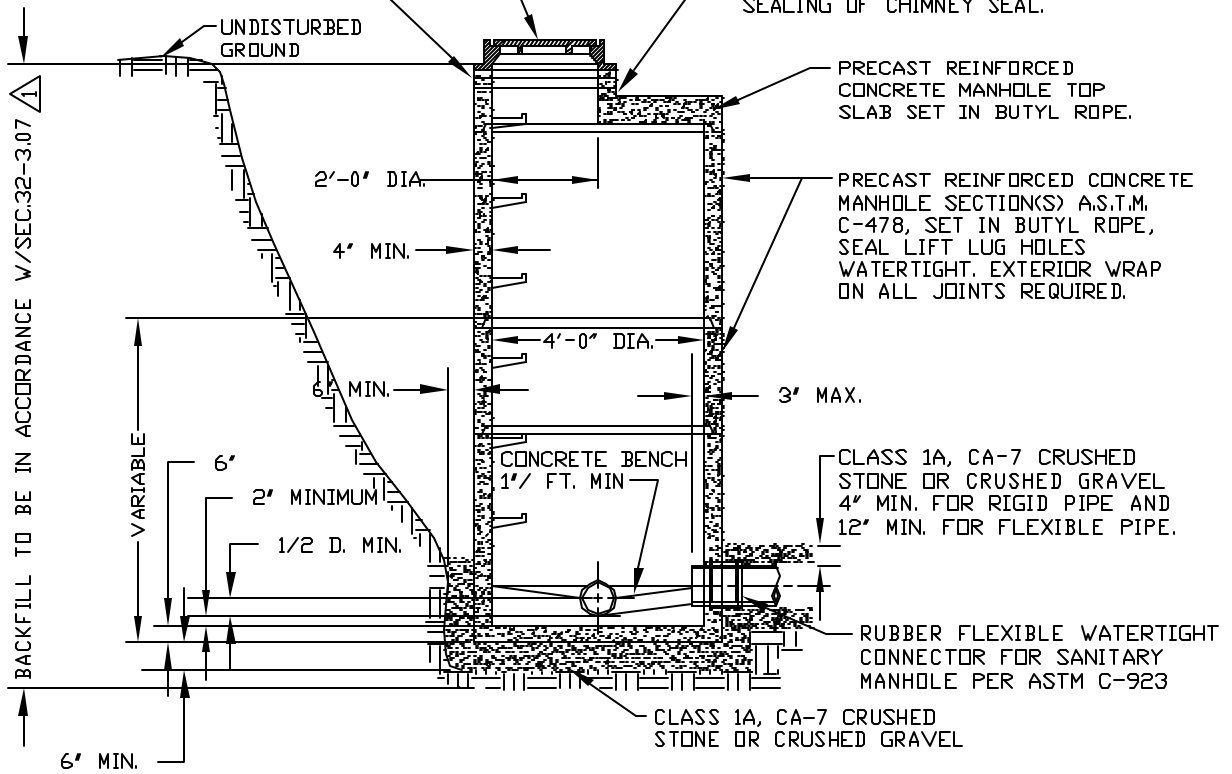
PRECAST REINFORCED CONCRETE
MANHOLE SECTION(S) A.S.T.M.
C-478, SET IN BUTYL ROPE,
SEAL LIFT LUG HOLES
WATERTIGHT. EXTERIOR WRAP
ON ALL JOINTS REQUIRED.

CLASS 1A, CA-7 CRUSHED
STONE OR CRUSHED GRAVEL
4" MIN. FOR RIGID PIPE AND
12" MIN. FOR FLEXIBLE PIPE.

RUBBER FLEXIBLE WATERTIGHT
CONNECTOR FOR SANITARY
MANHOLE PER ASTM C-923

CLASS 1A, CA-7 CRUSHED
STONE OR CRUSHED GRAVEL

BENCH SHALL BE CONSTRUCTED OF CLASS SI CONCRETE.



SECTIONAL ELEVATION



REFERENCE STANDARD SPECIFICATIONS
FOR WATER AND SEWER MAIN CONSTRUCTION
IN ILLINOIS (FIFTH EDITION)

**YORKVILLE-BRISTOL
SANITARY DISTRICT**

TYPE "B" MANHOLE

DESIGNED	JWF	APPROVED	PFM	SCALE	NTS
DRAWN		DATE	10/9/06		STD-006